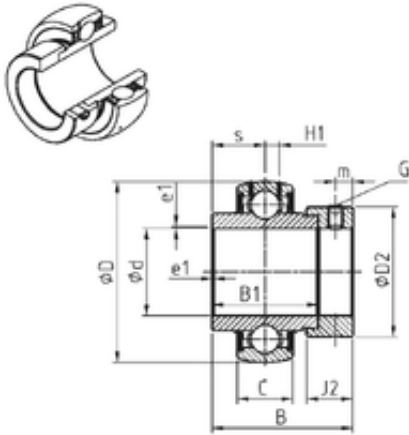




??? ??????????



EX216G2 SNR Deep Groove Ball Bearings

Bearing No. EX216G2

Size	80x140x95.2 mm
Bore Diameter	80 mm
Outer Diameter	140 mm
Width	95,2 mm
d	80 mm
D	140 mm
B	95,2 mm
B1	74,6 mm
C	33 mm
e	2 mm
a	6 mm
m	10,3 mm
s	37,3 mm
D2	110 mm
H1	10,3 mm
Thread (G)	M12x1,25
J2	27 mm
Weight	3,12 Kg
Basic dynamic load rating (C)	72,5 kN

EX216G2 Bearing 2D drawings and 3D CAD models